

THE Starport

2,706 SQ.FT.
ELEVATION A

THE Starport

2,758 SQ.FT.
ELEVATION B



Artist's Concept



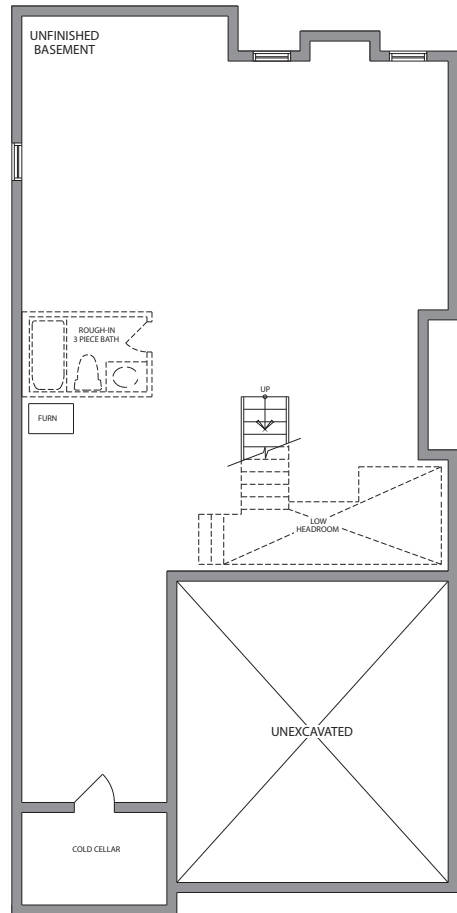
Artist's Concept

36'

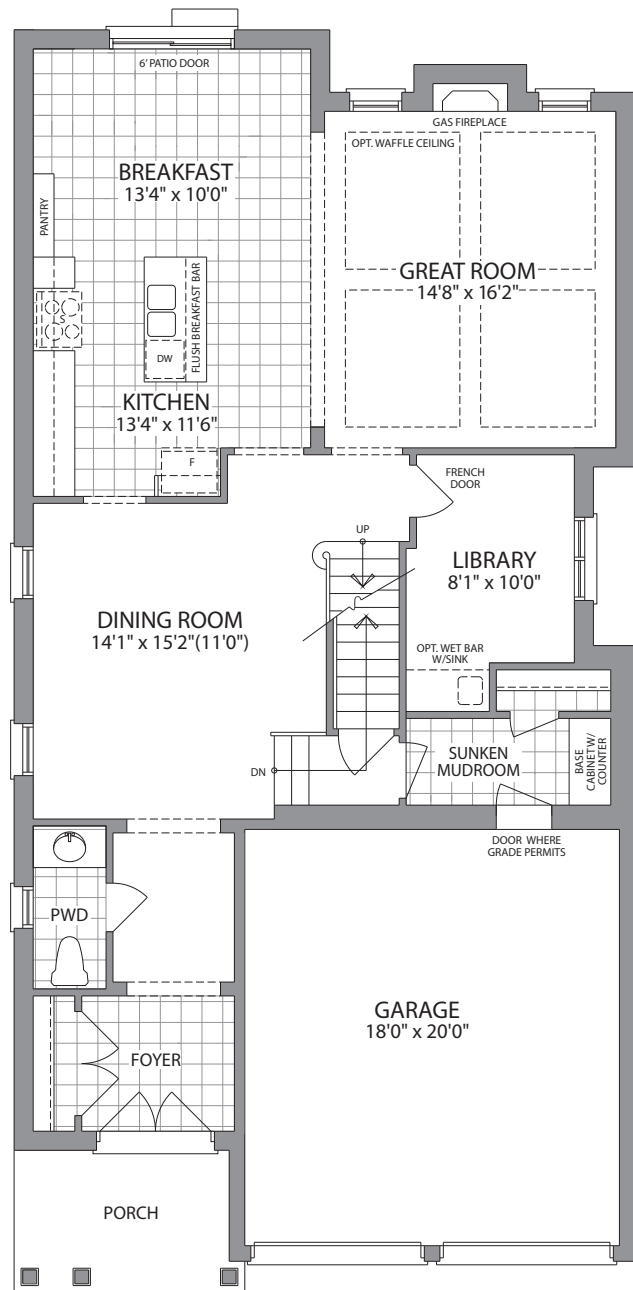
36'

ELEVATION A 2,706 SQ.FT.
ELEVATION B 2,758 SQ.FT.

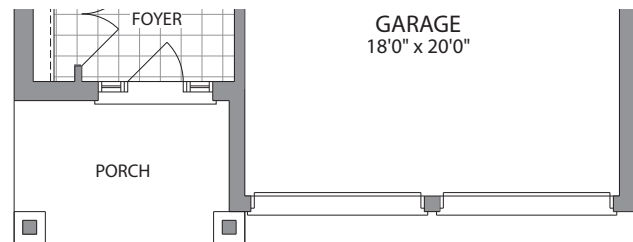
THE Starport



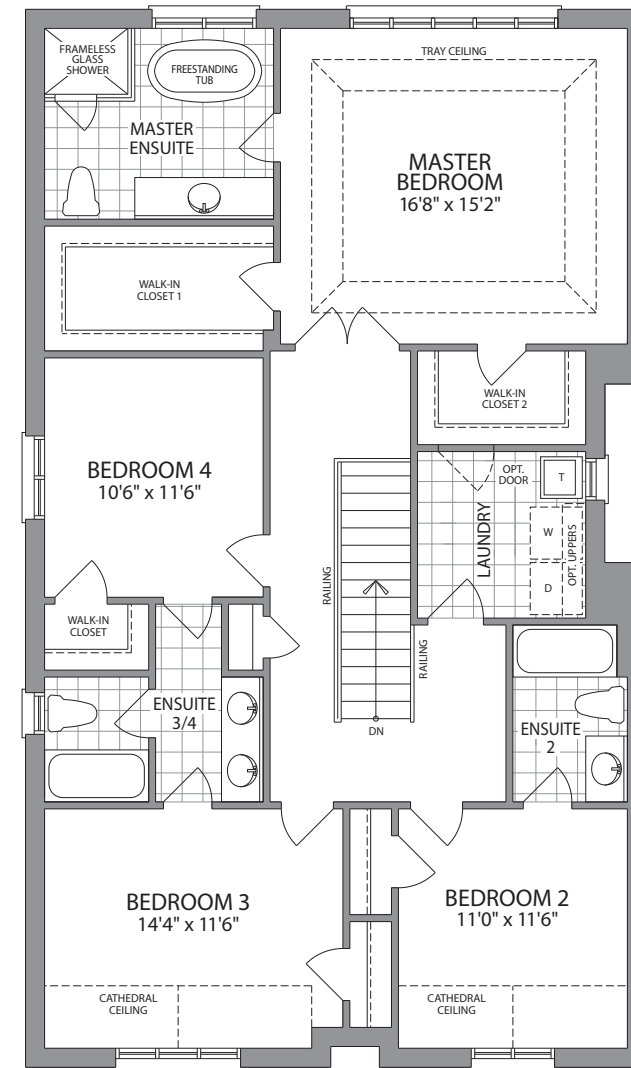
BASEMENT ELEVATION A & B



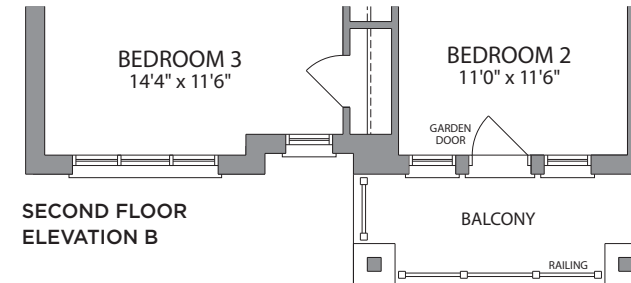
GROUND FLOOR ELEVATION A



GROUND FLOOR ELEVATION B



SECOND FLOOR ELEVATION A



SECOND FLOOR ELEVATION B

ELEVATION A

ELEVATION B



Ballymore
HOMES

*All drawings are artist's concept and may vary slightly from the final product. E. & O. E. Actual usable floor space may vary from stated area and square footage has been calculated based on usable living space according to Tarion rules and does not include garage or basement areas. Drawings may show optional features which may not be included in the base price. Bulkheads and box outs may be required as chases for plumbing and mechanical. Garage man door location may vary subject to grade. The number of interior and exterior steps may vary from what's shown based on individual lot/plot grading conditions. June, 2020 (36-5)