

# THE Elm Ridge

3,152 SQ.FT. |  
ELEVATION A



# THE Elm Ridge

3,169 SQ.FT. |  
ELEVATION B



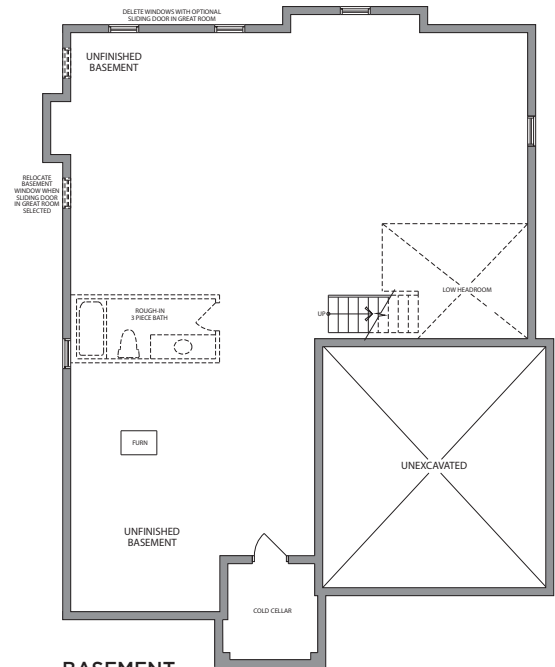
50'

50'

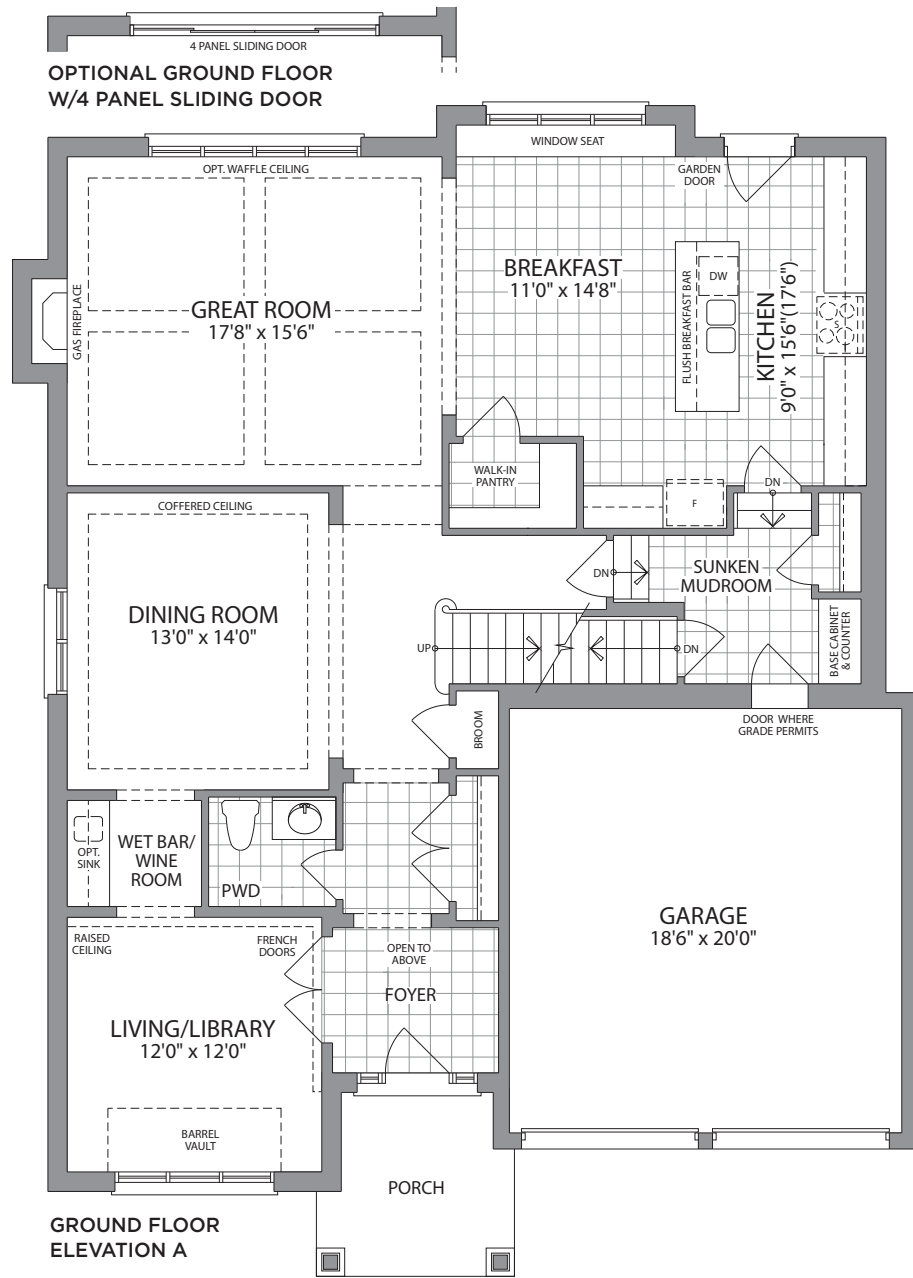


ELEVATION A 3,152 SQ.FT.  
ELEVATION B 3,169 SQ.FT.

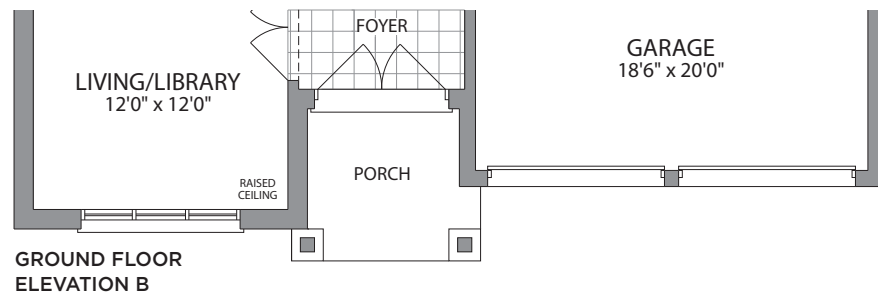
# THE Elm Ridge



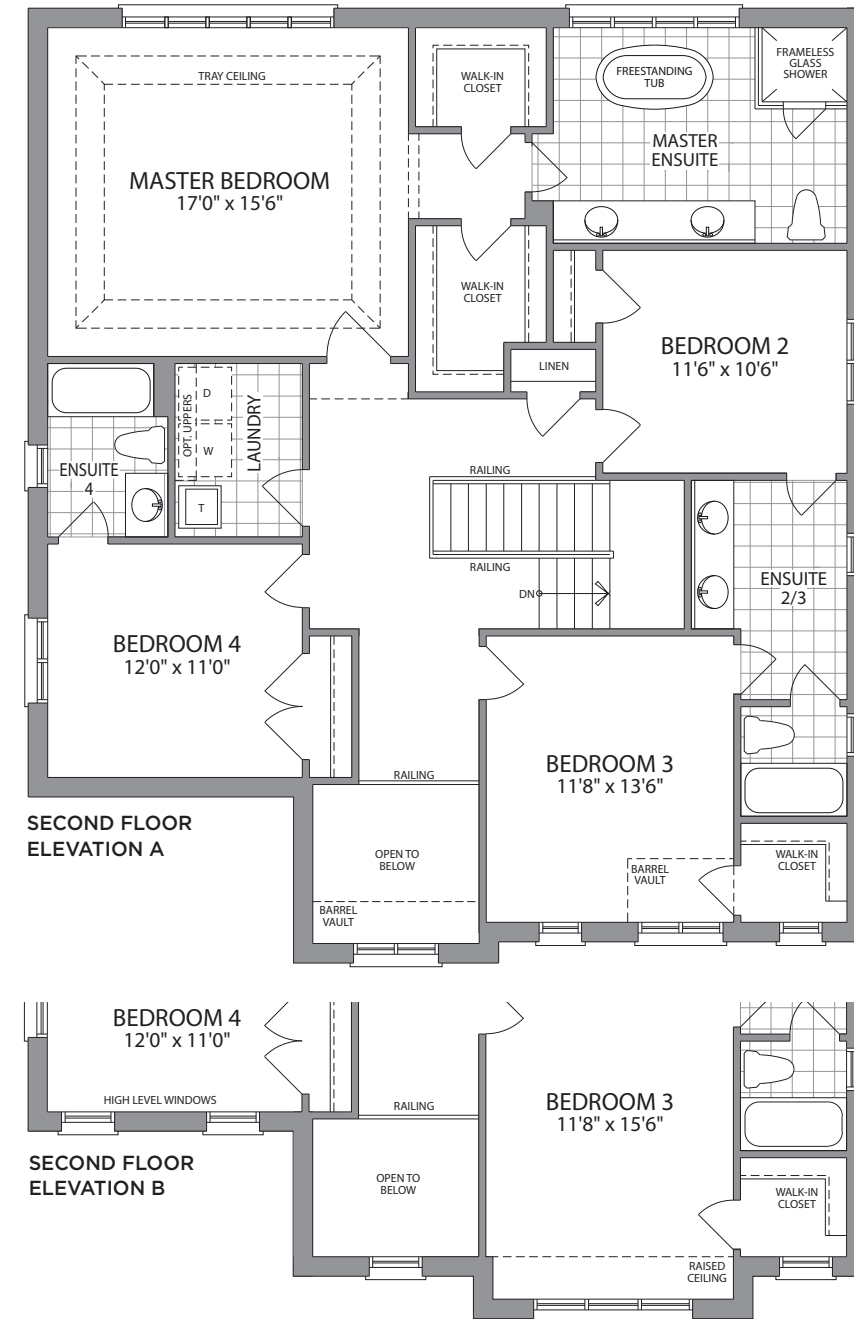
**BASEMENT ELEVATION A & B**



**GROUND FLOOR ELEVATION A**

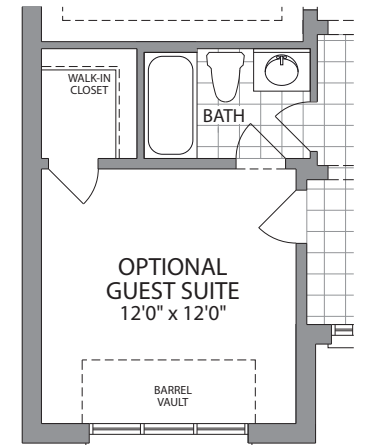


**GROUND FLOOR ELEVATION B**

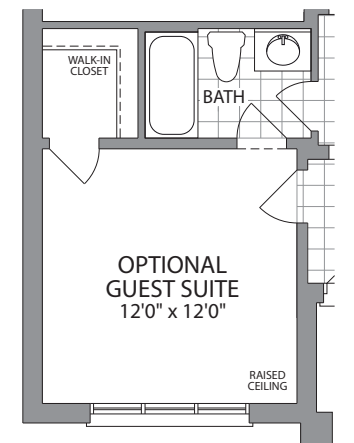


**ELEVATION A**

**ELEVATION B**



**OPTIONAL GROUND FLOOR W/GUEST SUITE ELEVATION A**



**OPTIONAL GROUND FLOOR W/GUEST SUITE ELEVATION B**



\*All drawings are artist's concept and may vary slightly from the final product. E. & O. E. Actual usable floor space may vary from stated area and square footage has been calculated based on usable living space according to Taron rules and does not include garage or basement areas. Drawings may show optional features which may not be included in the base price. Bulkheads and box outs may be required as chases for plumbing and mechanical. Garage man door location may vary subject to grade. The number of interior and exterior steps may vary from what's shown based on individual lot/plot grading conditions. June, 2020 (50-1)

**Ballymore**  
HOMES