

THE Brook Ridge

4,009 SQ.FT. |
ELEVATION A



THE Brook Ridge

4,018 SQ.FT. |
ELEVATION B

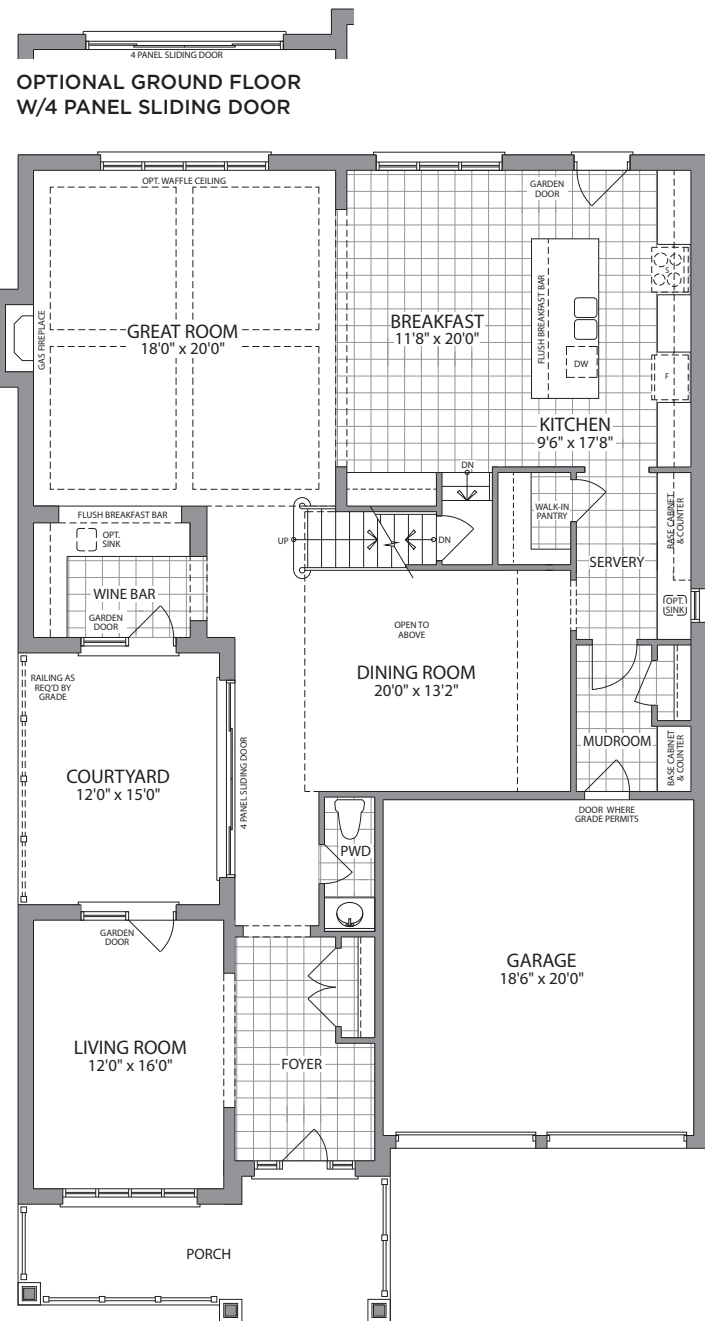


50'

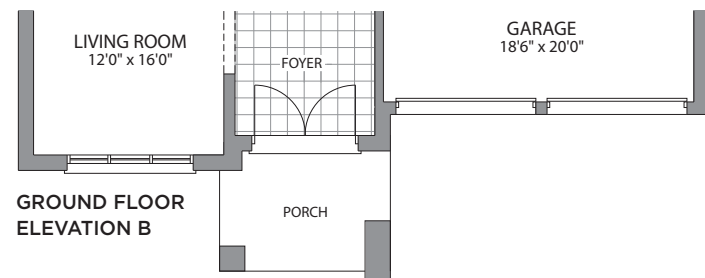
50'

ELEVATION A 4,009 SQ.FT.
 ELEVATION B 4,018 SQ.FT.

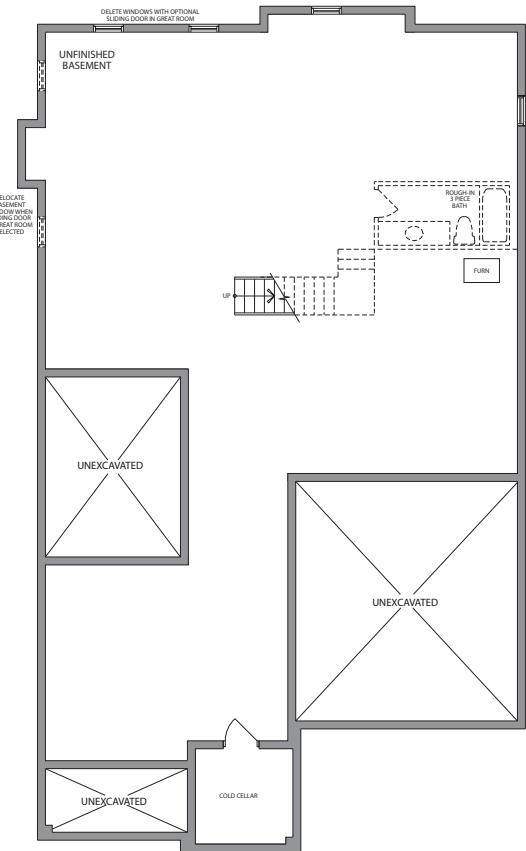
THE Brook Ridge



GROUND FLOOR ELEVATION A

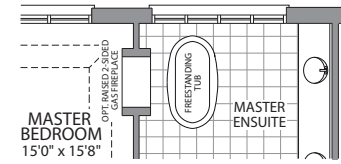


GROUND FLOOR ELEVATION B

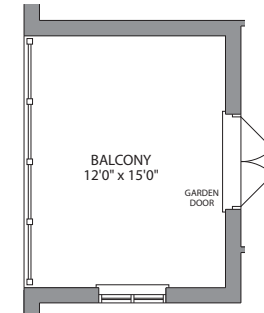


BASEMENT ELEVATION A & B

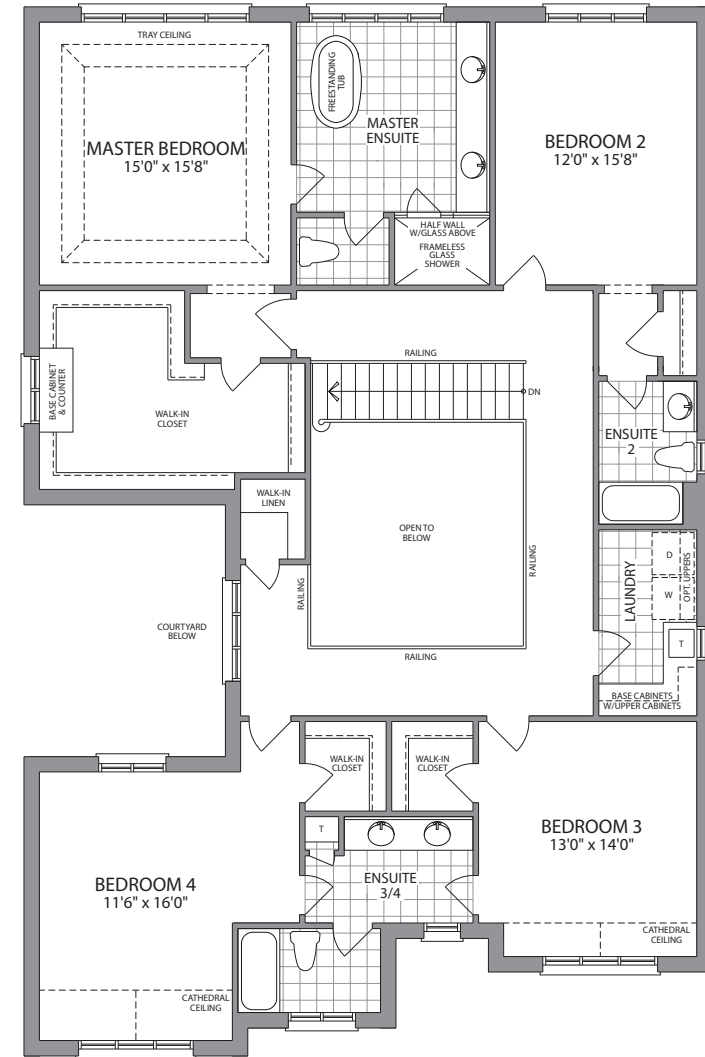
OPTIONAL GROUND FLOOR W/4 PANEL SLIDING DOOR



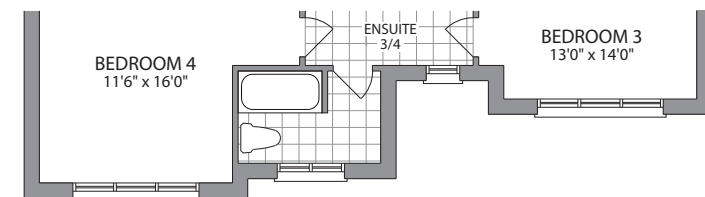
OPTIONAL RAISED 2 SIDED FIREPLACE



OPTIONAL BALCONY W/GARDEN DOORS



SECOND FLOOR ELEVATION A



SECOND FLOOR ELEVATION B

ELEVATION A

ELEVATION B



*All drawings are artist's concept and may vary slightly from the final product. E. & O. E. Actual usable floor space may vary from stated area and square footage has been calculated based on usable living space according to Tarrion rules and does not include garage or basement areas. Drawings may show optional features which may not be included in the base price. Bulkheads and box outs may be required as chases for plumbing and mechanical. Garage man door location may vary subject to grade. The number of interior and exterior steps may vary from what's shown based on individual lot/plot grading conditions. June, 2020 (50-3)